

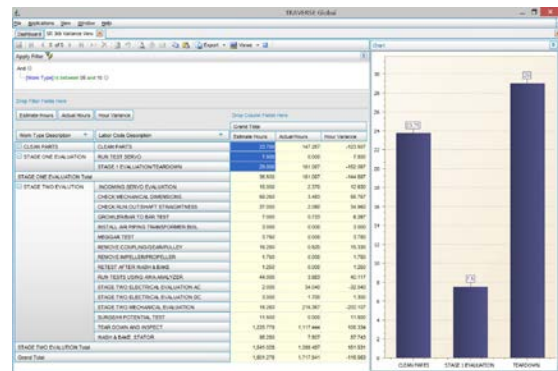
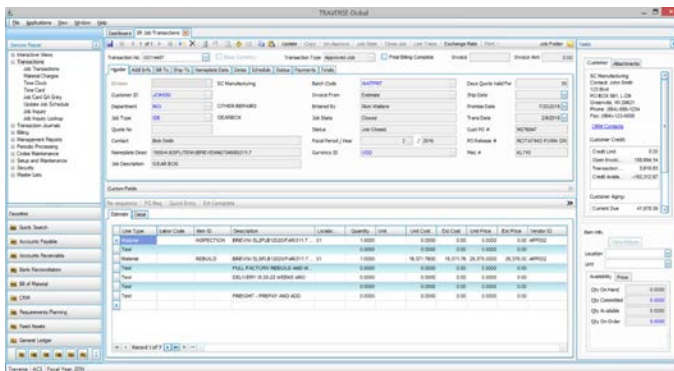


# SERVICE REPAIR for TRAVERSE MASTER

## Fully integrated software for Service Repair Shops

TRAVERSE MASTER is a fully integrated software solution for service repair shops. It combines Job Cost, Inventory, Distribution and Service, along with comprehensive accounting functionality to help manage operations and bottom-line performance. TRAVERSE MASTER can help you realize increased profits and dramatically improve shop efficiency.

Managing jobs from start to finish has never been easier with TRAVERSE MASTER Service Repair. Automate your shop and increase efficiency with Alerts, Customized QA sheets, Job Estimating, Mobile Shop Floor, and personalized reporting.



## How TRAVERSE MASTER Service Repair can help

TRAVERSE MASTER Service Repair helps you identify operation bottlenecks and monitor employee efficiency and work performance. Save valuable time by eliminating double entry of data, stoppage to find job status, and billing calculation errors by organizing jobs with unique parameters for expert tracking and analysis.

# SERVICE REPAIR (TRAVERSE MASTER)

## Mobile technology on the shop floor

Using TRAVERSE MASTER Mobile technology you can efficiently collect job information from the shop floor for QA worksheets, receiving jobs, tracking job status, entering time, and managing inventory associated with jobs.

## QA Worksheets

Our QA Worksheets allow you to enter test results along with digital pictures, spec sheets, and diagrams providing enhanced documentation for your jobs. Easily modify existing templates to help satisfy customers' unique reporting requirements.

## Service Repair Software features

- Compare actual performance to estimated time and dollars.
- View current profit in dollars and percentage at any point in the job process.
- Monitor all labor hours including over time and double time.
- Track all Purchase Orders issued to a job.
- Recall a job from history every time it comes in for a repair.
- Enter new jobs, using the copy function to select prior jobs for the same or similar repairs.
- Flexible repair invoicing includes customer pricing and multiple jobs on a single invoice.
- Build estimates from work plan templates.
- Perform quality assurance inspections.
- Design reports that make sense to you based on data you want to see with Interactive Views.
- Analyze job status and notes.
- View tests, photos, and attachments.
- Generate quotes and estimates.
- Eliminate duplicate entries.
- Analyze WIP.
- Measure performance.
- Schedule jobs.
- Track time.
- Export information to Microsoft Excel.