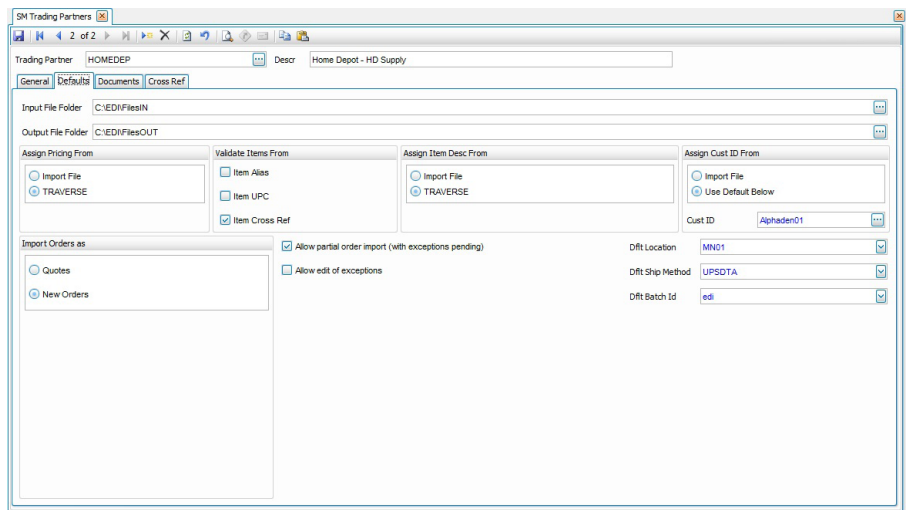


TRAVERSE EDI

TRAVERSE® EDI opens your business to the lucrative world of American major retailers. Whether you have a limited volume of sales or this is a new market for your Wholesale/ Distribution business, the opportunities are vast when implementing EDI.

Major retailers have adopted EDI as the unique method to exchange data with their vendors to lower costs, improve speed, improve accuracy and business efficiency.

EDI is necessary for maximum competitiveness and growth and most companies increase their business by 100% or more when they can exchange data via EDI.



Create trading partner records, configure defaults, and create cross references for Item IDs and ship methods between you and your customers/vendors.



TRAVERSE® EDI has been developed by a team with 25 years of experience. With TRAVERSE® EDI Manager you receive:

- **Functions that are fully integrated with TRAVERSE Inventory, Sales Order, and Accounts Receivable.**
- **A new set of controls giving your Sales, Order Processing, Customer Service and Accounting personnel the real-time information they need.**
- **A comprehensive communication package to perform and control all data sent to and received from your trading partners.**



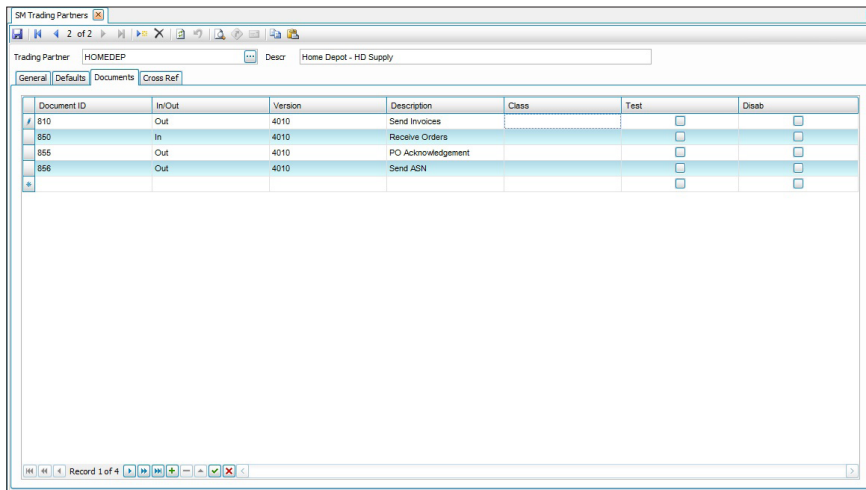
TRAVERSE EDI Features

- Inventory Items information enhanced to store data that is published with EDI catalog.
- EDI Purchase Order validation and conversion into Sales Orders.
- Sales Order processing generates EDI Advanced Ship Notice/ UCC128 label.
- Sales Order Processing generates EDI Invoice.
- UPC Catalog Publishing.
- Optional Item bar coding feature produces UPC/EAN product labels in the format requested by Retailers.

EDI Manager Features

- Supports major product coding such as UPC (Universal Product Code), EAN (European Article Number) or GTIN (Global Trade Item Number). Also allows for trading partner-specific SKUs, Vendor Codes, Buyer Codes and other client specific information.
- Full integration with an EDI Communication Application.
- Continuous update for compatibility with retailers standards.
- All transactions are archived for future reference.
- Optional online catalog published by product line or season/collection.

EDI Reports:
EDI Purchase Order, Detail,
and Summary Report
UPC Catalog Report
Trading Partner/ Inventory Item ID
Cross Reference Report



The screenshot shows a software window titled "SM Trading Partners" with a sub-window for "Trading Partner: H0MEDEP" and "Descr: Home Depot - HD Supply". The "Cross Ref" tab is active, displaying a table with the following data:

| Document ID | In/Out | Version | Description | Class | Test | Deab |
|-------------|--------|---------|--------------------|-------|--------------------------|--------------------------|
| 810 | Out | 4010 | Send Invoices | | <input type="checkbox"/> | <input type="checkbox"/> |
| 850 | In | 4010 | Receive Orders | | <input type="checkbox"/> | <input type="checkbox"/> |
| 855 | Out | 4010 | PO Acknowledgement | | <input type="checkbox"/> | <input type="checkbox"/> |
| 856 | Out | 4010 | Send ASN | | <input type="checkbox"/> | <input type="checkbox"/> |

Review and correct order exceptions prior to moving them into your TRAVERSE batch for processing. Orders without exceptions will automatically show up in the default batch selected on the Trading Partner setup screen.