

# Dashboard

Traverse Dashboard gives you an executive snapshot of key business indicators. You can choose from dozens of predefined business object configurations that capture business data from throughout Traverse and present that data in a variety of formats designed to help you easily analyze key business metrics. Access supporting source information with drill-down capabilities.

Personalize your Dashboard by selecting and positioning the dashboard objects you want to see, configuring them to present precisely the information you need, and choosing to view the data in graphical form, in a data grid, or both. You can also set an automatic refresh interval to ensure that the data you see is timely and accurate.

- **Administrative control over user access to various business metrics**

- **User preferences control the makeup of individual dashboards, including:**

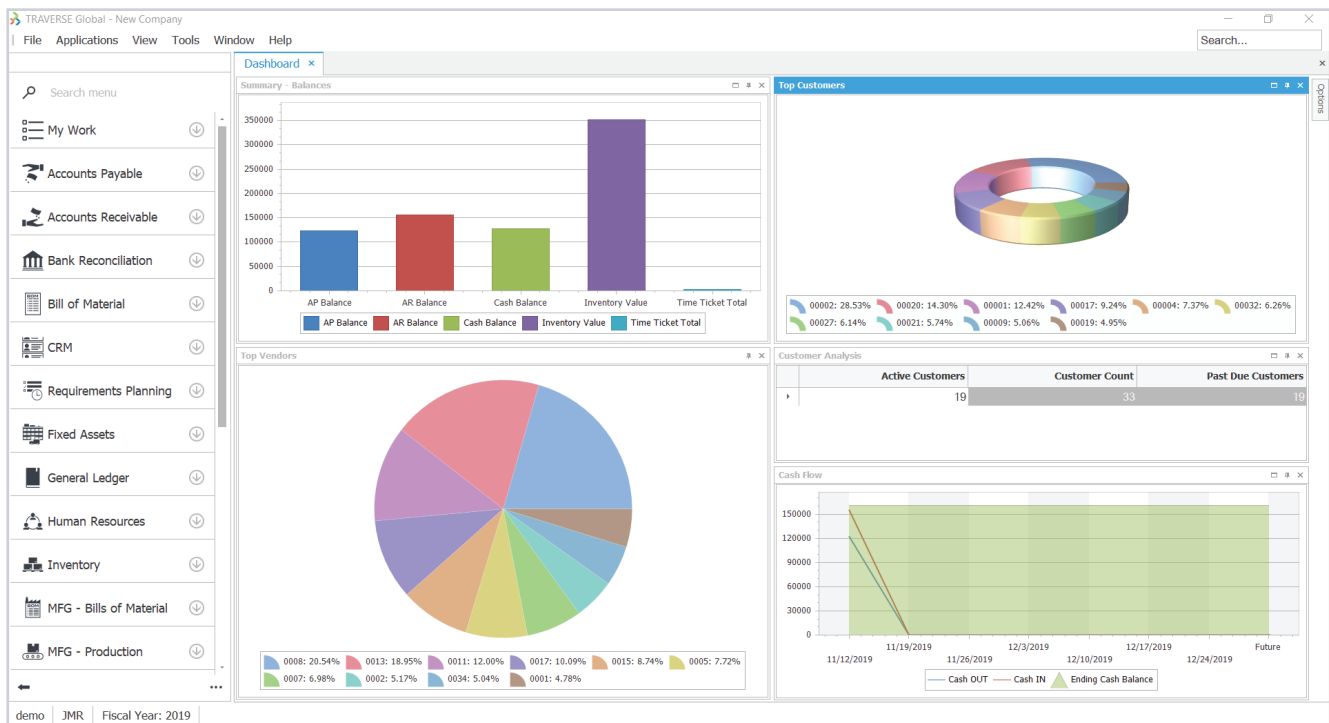
- Which metrics to view**

- Layout of the dashboard components**

- Parameters used for each component**

- Frequency of data refresh**

- View dashboards as charts or data grids**



You can access the Traverse Dashboard components directly within the Traverse shell or with a browser or mobile device.

# Dashboard

## Supported Browsers

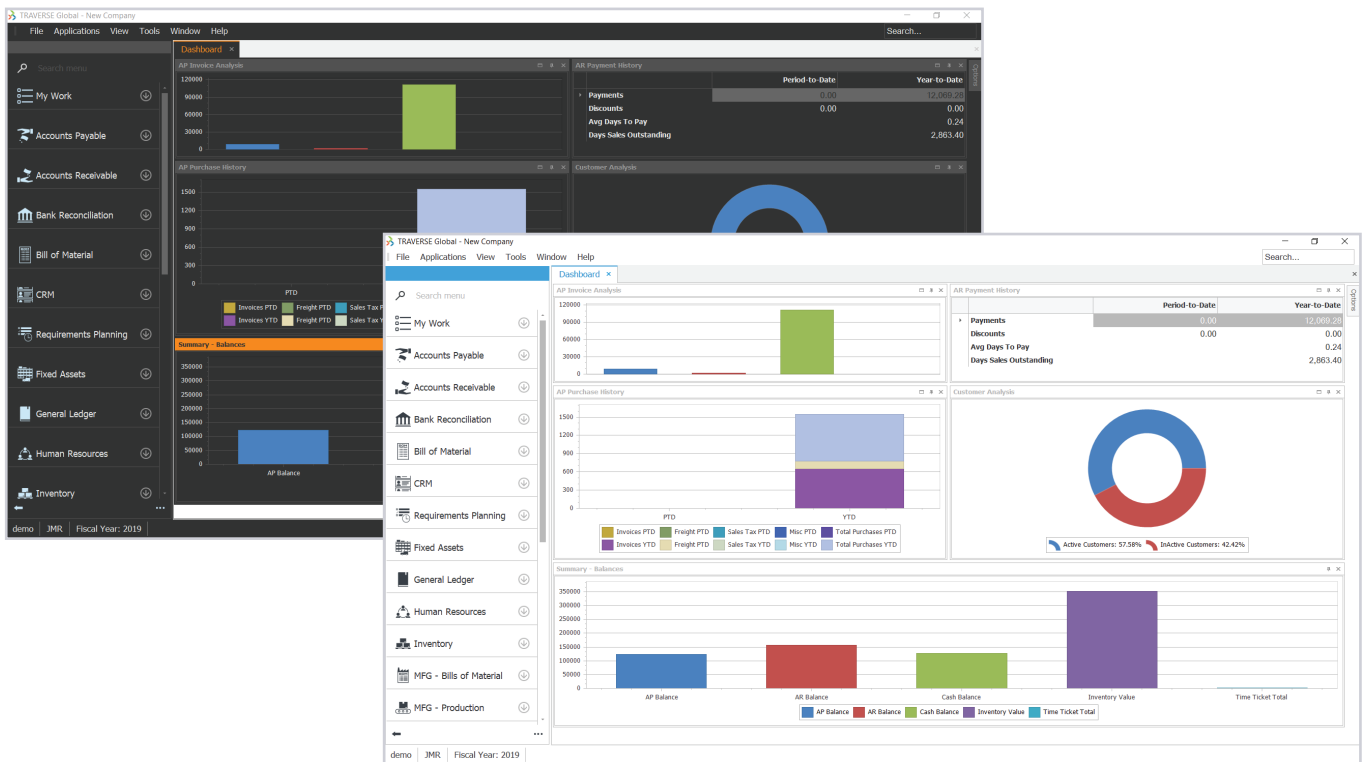
- Internet Explorer
- Firefox
- Chrome
- Safari

## Supported Mobile Environments

- iOS (Apple)
- Android
- Windows Phone

## Standard Dashboard Components:

- AP Aging Analysis
- AP Invoice Analysis
- AP Payment History
- AP Purchase History
- AR Aging Analysis
- Customer Analysis
- AR Payment History
- AR Sales History
- Cash Flow
- Purchase Order Status
- Sales Order Status
- Summary – Balances
- Summary – Sales and Profit
- Summary – Ratio Analysis
- Summary – Sales Orders
- Top Customers
- Top Items



Parameters on each dashboard object let you tailor the information to your specific needs, including choosing whether the information is charted or presented as text.

With proper permissions, each user can choose from the predefined business objects that capture business data from throughout the Traverse application suite.